

LABORATORY FINDINGS

Description 1 Loose Stone

Weight 8.08 ct

Dimensions 11.51 x 9.76 x 7.84 mm

Shape Antique Cushion

Cutting Style Faceted

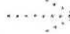
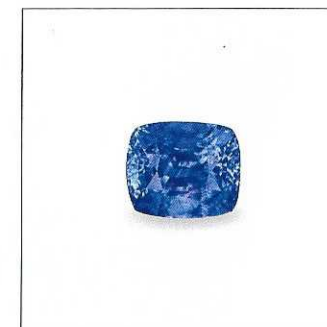
Crown Modified Brilliant
Pavilion Step

Transparency Transparent

Color (Daylight) Blue

Saturation Intense to Rich
Tone Medium Deep to Medium

Enhancements H

ID NATURAL
SAPPHIRE

ORIGIN

Madagascar

Madagascar is one of the richest gem sources on Planet Earth. From the 1990s on, this unusual island has produced some of the finest rubies, sapphires and spinels the world has ever seen.

COLOR TYPE

Cornflower Blue

The lively blue color of this gem earns it the Lotus "Cornflower Blue" distinction.

Lotus Gemology is one of the world's most respected colored gemstone laboratories.

This report is a professional opinion based on the results of scientific tests, coupled with the extensive experience of Lotus gemologists. The following pages contain information crucial to understanding the results.

Verify this report by referencing Report No. 9237-8019 with PIN No. 967888 at LotusGemology.com.

Lotus Gemology

Silom 19 Building, Suite 411 • 45/1 Soi 19, Silom Rd.

Bangkok 10500 • Thailand

Tel: +66 2 117 3616

info@lotusgemology.com • www.lotusgemology.com